



MAKE A JAWA DOLL

easy tutorial

**Step-by-Step instructions
to make your own Jawa doll**

Jawas are one of my favorite Star Wars characters.

They are desert scavengers from the planet Tatooine who collect/steal droids and scrap metal to sell.



This tutorial uses cheap porcelain dolls for the Jawa body. These dolls were popular in the 80's and now you can find them in most thrift stores.

Note that you don't need a sewing machine, you can sew this by hand. It will just take you longer to finish.

I didn't create a pattern for the robe & hood since porcelain dolls vary in size and shape. There is no standard size for these dolls. Even those that are of the same height, they may have thinner arms, larger heads, chubbier waists, etc. But it's easy enough to make a custom robe pattern by tracing around the body of your doll.

Materials Needed:

- Thrift store porcelain doll (costs about \$5-10 Canadian dollars).
Try to find one over 18" tall. You can use any size you want but I think the larger dolls are easier to work with and look cuter standing on the floor. But if you want a Jawa to fit a certain shelf space you can use any suitably sized doll.
Don't worry if it has messy hair, you can trim it shorter, make into braids or completely remove the wig if you like.
Make sure it comes with a doll stand or else you'll need to buy one separately. Porcelain dolls don't usually stand on their own.
And bonus if she has nice black or brown boots.



Usually these dolls are in the housewares/collectibles section of thrift stores. Don't worry if the doll has messy hair or dirty clothes. But try to get one with a stand and nice shoes or boots.



Here is one doll I used to turn into a Jawa.

- 1 yard of brown fabric (preferable “Monks Cloth” or a Linen type fabric or a suitable blanket fabric dyed dark brown) Wash it before you start cutting because of shrinkage.
- Glue, sewing thread
- Hockey tape
- Fake fur
- Black socks
- Yellow jewel stickers for the eyes
(If you can't find them in yellow or the right size, try painting the clear ones with yellow alcohol paint.)



- Leather for bandolier pouches, the gun holster and jewelry beads or velcro for the pouches.
- Thin belt for the bandolier (Look for weathered thrift store belts. I found a great one and cut it in half to make 4 belts. If the belt doesn't have a small buckle use rivets or glue to attach pieces.)



1. Place hockey tape over eyes to hide the facial features and darken the face area. This step might not be needed if your sock is thick and dark enough.



2. Cut a sock at the heel and you have just made a balaclava for your doll. (Wait until the hood is finished to glue on the eye jewels.)



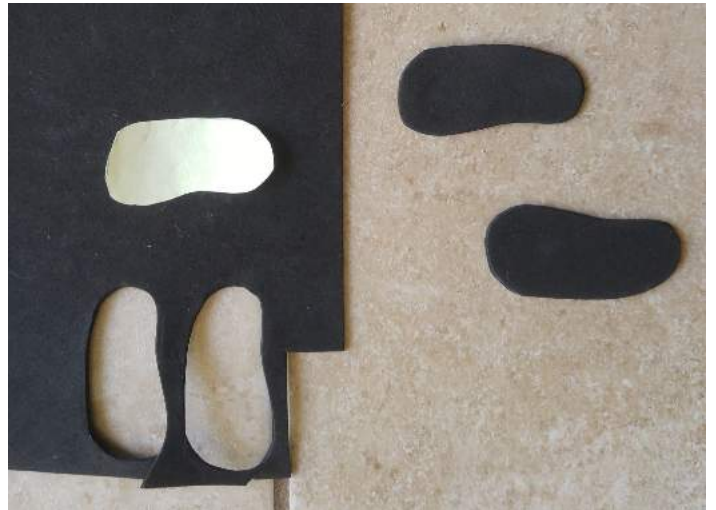
3. If your doll has black socks, you can skip this part if you like.

Wrap the legs in hockey tape. I like to cover all the porcelain leg up to the knee. If your doll has nice boots, lucky you, you're done. If you have ugly shoes, cover them in scrap fabric. Glue on little fabric scraps onto the ugly shoes, bit by bit until they look right.



If your doll doesn't have shoes, you can glue fabric strips right onto the foot, on top of the hockey tape socks. Start with a fabric piece on the top instep, then around heels, and then fold under and glue under foot. Lastly glue on a piece of foam under the foot as the outer sole. (To make the sole template, just trace your dolls foot onto paper and then onto the foam. To make a shoe into a boot, just sew a little fabric tube and slip on.





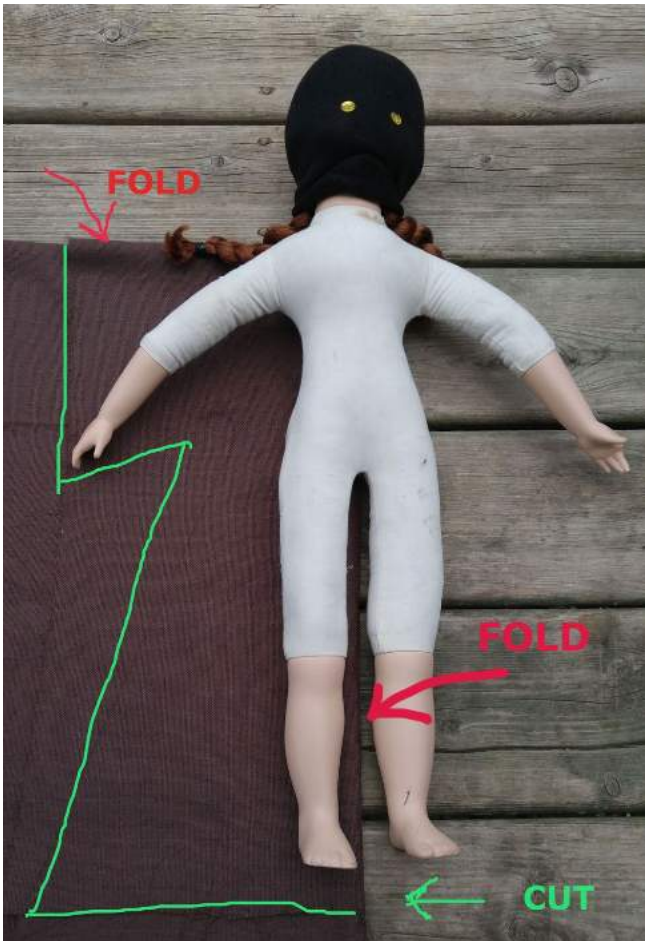
4. For the Jawa hands, use hockey tape to wrap around the fingers, wrists and up the arms. Again, I like to wrap the tape up to elbow to cover all the porcelain. Use a pointy tool to define and secure the tape in between the fingers. Then glue on some fur to the top of the hand. I like to leave the bottom/palm hairless so that you can still see the fingers somewhat.





THE ROBE

5. For the robe fold the fabric twice. The folds will be at the doll shoulders and center of legs). Place the doll on top of fabric and try to straighten the arms a bit. Cut the fabric near the fingertips and toes. You want a bit of extra fabric to fray the edges, drape on the floor and hide the doll stand. Cut around the underarm and down the leg side. You'll have an angel-type shape. Try to keep it more rectangular than triangular and try not to give your Jawa a slim waistline. Cut a tiny triangle in the corner to mark the neck area.



6. Start sewing! Sew under arm and down leg area.
Clip a few triangles around underarm curve to make the fabric hang better.



7. Make the neck hole larger by cutting a line down center just big enough so that you can squeeze the doll head through the robe neck hole. (You can do the neck slit before or after sewing.)
Carefully slide the doll arms through the sleeves. Porcelain dolls typically have a wire inside the cloth body parts, bend it as needed. Use a safety pin to secure the robe neck opening.
The really nice thing about this pattern is that you don't need to finish any of the edges. You want them to naturally fray a bit.

THE HOOD

8. For the hood, cut 2 rectangular pieces of fabric large enough to cover the doll's head and rest on doll shoulders. Depending on the size of your doll and the size of her head, the measurements will vary. For a doll about 18 inches tall, my fabric measured about 15 inches long by 9 inches wide. One in brown fabric and one in black fabric. The black lining in the hood will give it more structure so that it isn't floppy over the face and it darkens the face area. Sew the pieces together into a tube, then turn inside out. You may want to iron the hood so that the lining and brown cloth lay flat together better





You'll end up with a tube shape, turn inside out to hide your stitching.

9. Fold in half, and with the brown fabric right sides facing and the frayed edge at bottom, stitch down one side. This will be the back seam. After sewing, turn over so the black lining is now inside.



10. Hood Ties

For the ties, cut 2 long strips about 2 by 15 inches. Place the strips in between the brown and black lining then stitch to the bottom of hood. Use black thread here to blend with the black lining fabric. You can add a little velcro if you want to secure the hood around the neck more. But just wrapping the ties around the face to the back works ok on its own.

Now is a good time to glue on the eyes. Place them below the dolls eyes. Next to her nose or on her cheeks is usually a good spot.





THE POUCHES

11. You can make the pouches as simple or as detailed as you like. Use templates to trace the pattern onto leather, then cut and glue onto the belt bandolier. You can trace the pouch pattern right off the photo on your computer screen display with tracing paper. Use the zoom feature to get the size you want. You can make simple pouches by just folding a rectangular piece of leather.

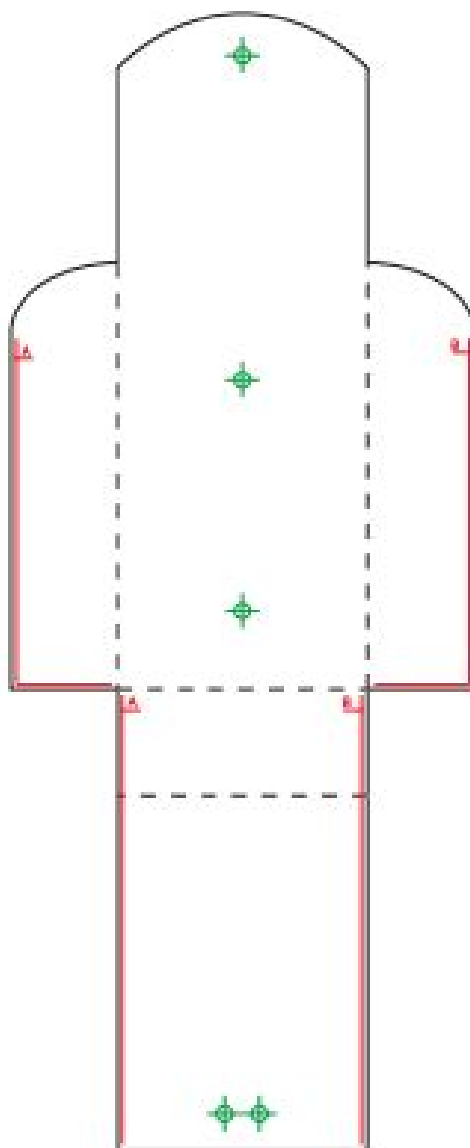


If you want them to open/close use velcro or glue a bead to one side and cut a slit opening on other. Glue on top of your leather belt strap. I attached 2 or 3 pouches to each leather belt strap.



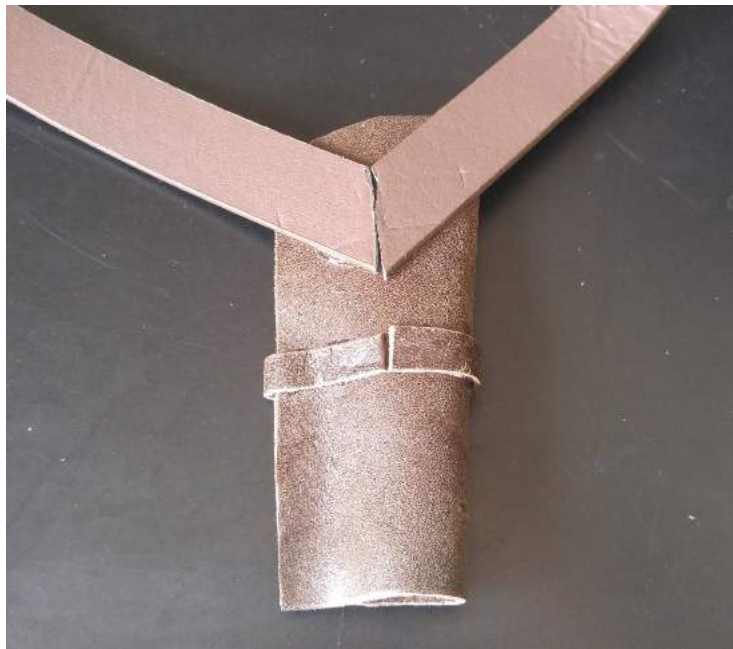
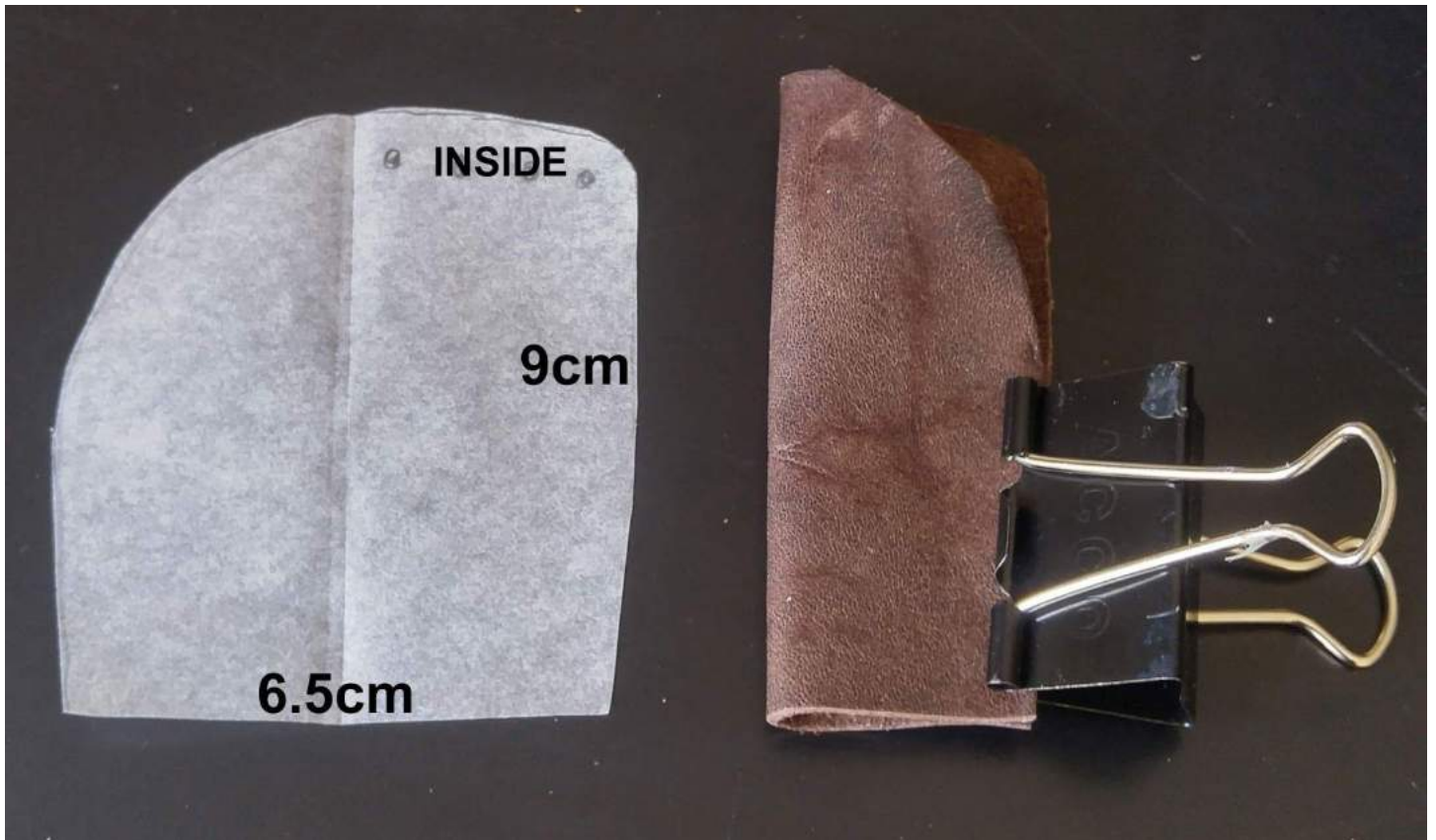


You can find various Pouch Patterns online.



This one is used by the Tusken Raiders, [Enfield Pouch](#)

To make a gun holster, trace this photo onto paper or print this image to a size you like. This size works well for an over 18 inch doll. Fold over and glue one edge. Clamps are handy for securing the piece while the glue sets.



Attach the belt pieces at an angle. That way they'll hang better on your Jawa's shoulder and hip. Add any additional details you wish. I glued a band around the center.



YOUR FINISHED JAWA!

